

Naples REALTOR[®]

SUMMER 2016

NAPLES AREA BOARD OF REALTORS[®] MAGAZINE

Safety First

NABOR[®] prioritizes ways to keep members out of dangerous situations.



PLUS +

Turbocharge Your Business

Fast Track To Success class revs up real estate careers

Attention REALTORS[®]:

Complete Code of Ethics Training Now

A Partnership of Opportunities

NABOR[®] and Women's Council of REALTORS[®]
working to foster professional growth



Before and After

Fast-track, full build-out, custom renovation for a high-rise condominium in Bay Colony.



BEFORE
AFTER



LOCATION:

The Carlisle,
Bay Colony, Naples

SPECS:

3 bedrooms, 3 baths
Total square footage
under air: 3,200

DESIGNER & CONTRACTOR:

Kira Krümm
International
Design and Infinite
Renovations, LLC

PROJECT:

This Gulf-front condominium was designed as a second home for a Northeastern couple and their six young adult children to enjoy during season. The clients requested a stylish, updated interior with soft neutral backgrounds and transitional décor. The goal was to increase the level of quality within the home's interior to be comparable in value with surrounding prime Gulf-front real estate, while working under the time constraints imposed by high-rise building regulations.

"Completing a full-scale custom renovation during the "off-season" months takes vision, planning, efficiency and experience. Our team specializes in this type of fast-track process, and we are able to achieve a high level of quality in a very short window of time," says Kira Krümm.

ISSUE 1:

Improve outdated finishes

SOLUTION 1:

All flooring, countertops, cabinetry and doors were redesigned and replaced with fresh modern materials in white and light grey tones. The formal, outdated, small-scale marble flooring throughout the unit was replaced with a casual, wide plank, gray-washed French oak-wood floor. We introduced Pompeii quartz countertops throughout and modern tile accents including a white stone and glass kitchen backsplash and unique wave pattern tile accent wall in the master bathroom. In the living room, the original concrete slab ceiling was redesigned so the new modern fan could be centered. We built a wood panel to hide the electrical relocation, adding trim



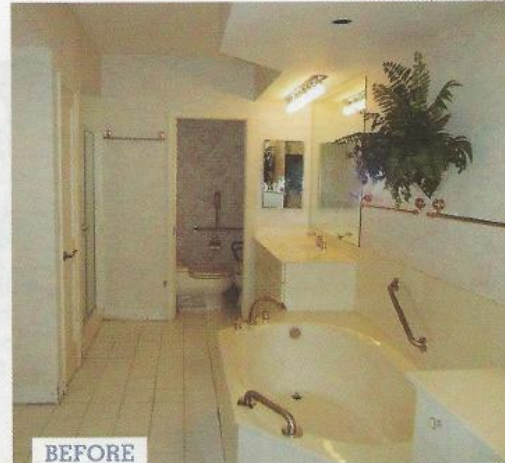
BEFORE



AFTER



AFTER



BEFORE

details and an accent tray adorned with a luminous artistic finish. This ceiling feature added character to the plain concrete ceiling and created a sense of space over the seating area.

ISSUE 2:

Improve space planning and functionality

SOLUTION 2:

In the master bedroom, we transformed a hallway wet bar and vanity into a custom, built-in desk area. In the master bathroom, we eliminated a secondary water closet and linen closet to expand the shower. This created a larger area for “her” with a modern, custom makeup vanity. The outdated, nonfunctional Jacuzzi was replaced with a chic, freestanding

porcelain tub. All new furnishings and décor were brought in, custom-curated for the clients’ active lifestyle, taking into consideration their large, active family.

ISSUE 3:

Outdated appliances, plumbing, and light fixtures

SOLUTION 3:

All appliances, fans and fixtures were updated with new, modern replacements. Recessed lighting in the Master Bathroom was used to replace the outdated “Hollywood” light fixtures. Accent lighting and dimmer controls were also added for warmth and functionality throughout.

THE RESULT
 The result is a spacious, functional, modern interior that is luxurious, livable and well worth the investment.