

FLORIDA

INTERNATIONAL MAGAZINE

DESIGN NOW!

116 Architects, Designers & Decorators Speak Out

THE INSIDE STORY

150+ Pages Of Florida Residences, Penthouses, Vacation Homes & More

MINDS OVER MATTER

Stylemakers Showcase Art & Furniture With Soul

PRODUCT LINE-UP

New Furnishings & Accessories From Foyer To Backyard

EXCLUSIVE: YABU PUSHELBERG

Up Close And Personal With Commercial Design's Hottest Duo

HOROSCOPE

Page 192

AUGUST 2008

\$4.95US



0 71658 01218 9
floridainternationalmag.com

HOME & DESIGN

ANNUAL DESIGNERS DIRECTORY

Judith Sisler Johnston

Sisler Johnston Interior Design

"Our goal is to design a luxurious yet comfortable setting that will appeal to the client while also creating a place where guests would feel welcome too."

Jacksonville
904/288-0908 | www.sislerjohnston.com

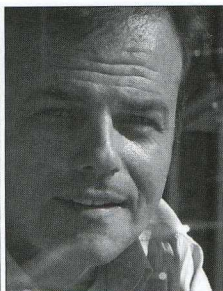


Kobi Karp, AIA, ASID

Kobi Karp Architecture & Interior Design, Inc.

"We adhere to the vernacular, the context and the cultural influences of each project and community. Our style is ecologically sensitive while still fulfilling the desires of the client."

Miami
305/573-1818 | www.kobikarp.com



Alexandra Karram, ASID

Alexandra Karram Interiors, Inc.

"I seamlessly blend numerous individual rooms or spaces together to create a clean, open, fresh feeling. A perfect space should provide a rare, unique attraction and function, while still fitting comfortably amongst the others."

Boca Raton
561/447-7711 | www.alexandrakarraminteriors.com



Liliana Korn

Korn Interior Design

"Design is the key that opens the door to worlds of magic and beauty. My mission as an architect, as an interior designer and as a general contractor is to go beyond my clients' expectations, bringing through good design and new blessings into their lives."

North Miami Beach
954/520-3182 | www.korninteriordesign.com



Kira Krümm, ASID, AIA

Kira Krümm Interior Design

"Duality and balance are key essentials in all of my designs. I search for the perfect combination of unique elements and use my artistic ability to compose interiors with a modern edge and classic style."

Estero
239/992-5586 | www.kirakrumm.com



Eloise Kubli, ASID

Collective Construction & Design, Inc.

"I like to blend the old with the best of the new. It's important to be site specific and embrace and capture the views and architecture. I always listen to my clients, incorporating their lifestyle and having an awareness of and respect for detail."

Plantation
954/733-8282 | www.collectiveconst-design.com

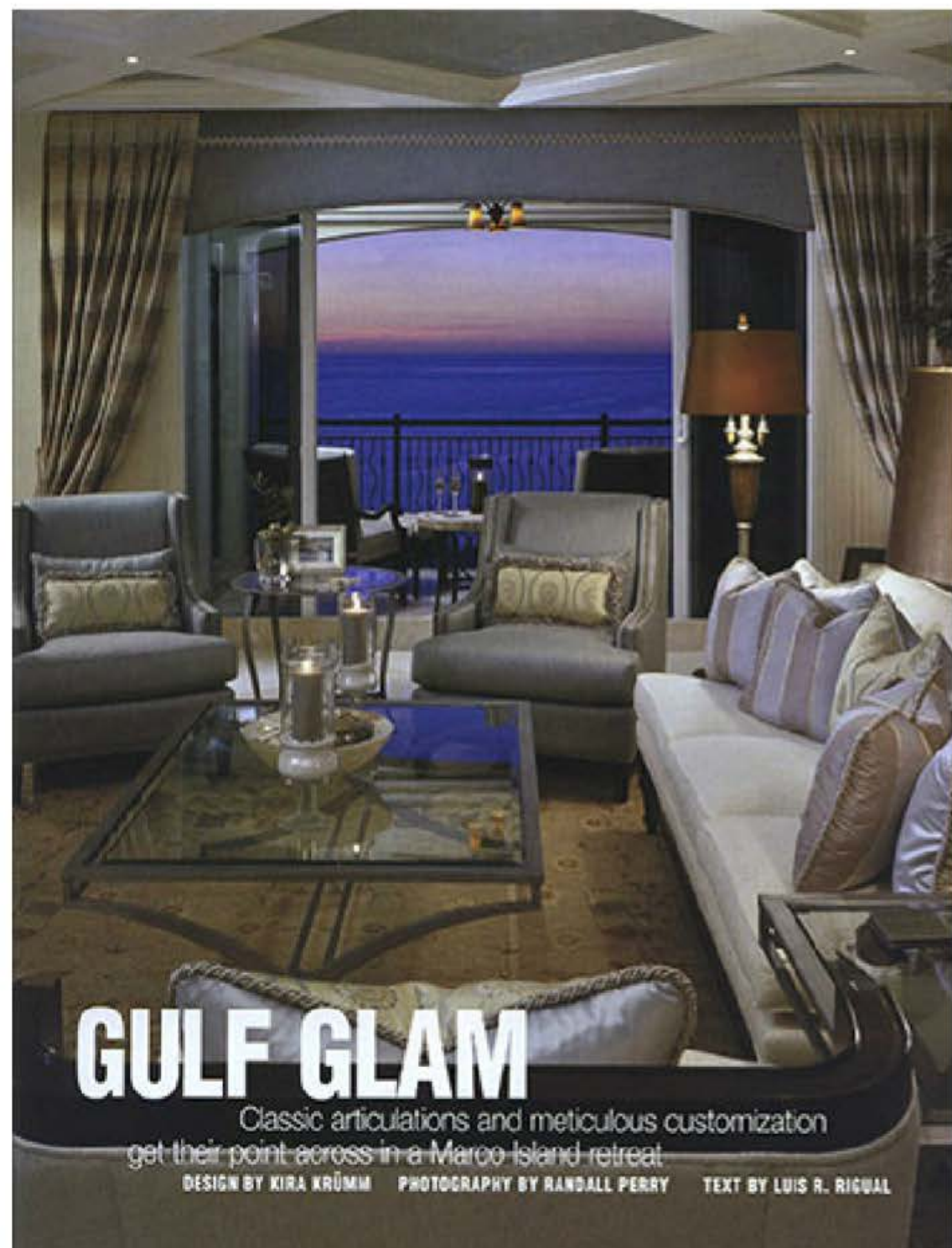


Sofia Joelsson
SoJo Design, LLC
Photo by James Wilkins

Janis Hopkins

RADIUS Enterprises
Photo by Reagan Rule





GULF GLAM

Classic articulations and meticulous customization
get their point across in a Maroo Island retreat.

DESIGN BY KIRA KRÜMM PHOTOGRAPHY BY RANDALL PERRY TEXT BY LUIS R. RIGUAL

**"The environment reflects a balance between
classical values and a contemporary lifestyle.**

**The end results are classic and elegant
while remaining warm and inviting."**

— KIRA KRÜMM



Vacation homes can be tricky endeavors for designers when their owners insist on a particular style they've become comfortable with, but which may not be suitable for the new space. Exterior designer Kira Krümm understands this tangent all too well. That's why when her Midwestern clients insisted she deliver a classic aesthetic for their Maroo Island residence, Krümm knew the key lay in working in some modern touches to ensure the home would be in tune with the Gulf Coast's tropical climate. But classic she delivered — with details at every turn.

"The environment reflects a balance between classical values and a contemporary lifestyle," says Krümm. "The end results are classic and elegant while remaining warm and inviting."

In the living room, Krümm incorporated the colors of the Gulf into the design equation through a blue Venetian plaster finish on the ceiling. Ocean speeches also make their mark in the fabrics used for the furniture. Lighted display cabinets filled with art and memorabilia provide a point of local interest.

The formal dining area is a showplace defined by the clever use of columns and custom millwork. The room houses a gooseneck dining table with an etched base surrounded by custom dining chairs in two-toned tufted silk that's repeated on the window treatments. Anchoring the elements in place on the floor is a 10-foot-radius oval that incorporates limestone, Jerusalem marble, Crema Marfil and Empress granite into its design, a medallion motif mirrored in smaller versions throughout the residence. Elsewhere, from social rooms to private suites, the Krümm signature remains consistent.

"The entire transformation was accomplished in six months," says Krümm. "The owners now have the comfort of home with the amenities of a five hotel." As requests go, a vacation retreat couldn't ask for more. □

Below, clockwise from left: The spacious entry features lush custom millwork; the dramatic dining room; Aida and Dream shades offer a soothing palette in the guest bedroom; Top: Designer Kira Krümm; Opposite: The living room at dusk.

