

# PORTFOLIO

MARCH 2017

PORTFOLIOMAGAZINENAPLES.COM

THE MAGAZINE OF LIFESTYLES, INTERESTS & LEISURE



Koastal Design Group - Kira Krümm & Co. • [KoastalDesignGroup.com](http://KoastalDesignGroup.com)



*TRANSFORMING A BAY COLONY VACATION CONDO INTO  
AN AWARD-WINNING TRANQUIL RETREAT*

# BEFORE AND AFTER

*INTERIOR DESIGN BY:*  
KOASTAL DESIGN GROUP - KIRA KRÜMM & CO.

*PHOTOGRAPHY BY:*  
RANDALL PERRY PHOTOGRAPHY

Tranquil neutral backgrounds and transitional décor create a chic yet inviting interior in this spacious gulf-front condominium at the Carlyle in Bay Colony, designed by Koastal Design Group – Kira Krümm & Co. Intended as a second home for a Connecticut couple and their six young adult children, this 3,200 sq.ft., three bedroom condominium was to be luxurious getaway with a five-star feel and the comfort and livability of home.

With Infinite Renovations as the general contractor, the outdated existing backgrounds and fixtures were replaced with fresh new selections, custom-curated for the clients' active lifestyle. All flooring, countertops, cabinetry, doors, millwork, and fixtures were redesigned and replaced with new, modern selections in white and grey tones. All appliances, fans, and fixtures were updated, and new accent lighting, and dimmer controls were also added for warmth and functionality throughout. All new furnishings and décor were selected in a mix of modern materials such as stainless steel, glass, metallic and weathered painted finishes, and "family-friendly" fabrics, to create a look that is livable and luxurious.

Completed in only four months from start to finish, Koastal Design Group, in collaboration with Infinite Renovations, achieved a spacious, functional, modern interior that is both luxurious, livable and well worth the investment.



Before



After





After



Before

The original, formal 12" polished marble flooring in the main living areas was replaced with a casual, wide plank, grey-washed French Oak.

The concrete slab ceiling was redesigned to center a fan over the seating area. A wood panel was built to hide the electrical re-location, which seconds as a detail adorned with a luminous artistic finish.





After

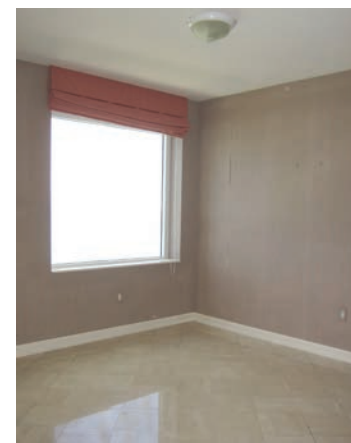


Before

The kitchen was completely renovated to include a white stone and glass back-splash, Quartz countertops, all new custom cabinetry in two tones, and stainless steel state-of-the-art appliances.

A custom square concrete slab breakfast table and banquette create seating for eight. A new dropped ceiling, created to center the modern chrome chandelier, mirrors the durable square tabletop below.

Before



After



The powder bathroom is sleek and serene with new white porcelain “linen-look” flooring, a floating vanity sink with white glass cabinet doors, and a new textured metallic wallcovering in a luminous “moonlight silver”.



After



After

The original formal dining room was replaced by a cozy den for family overflow. A sleeper sectional sofa, unique arm chair, and upholstered cocktail ottoman create a cozy seating area and expanded sleeping space. The walls were treated with a wainscot design and mirrored on one side for reflection. A bronze metallic wall-covering was selected for the accent wall and new recessed ceiling tray.



Before





After

The master suite's tranquil neutral backgrounds, clean lines, and sleek aqua accents create a serene setting that echoes its beautiful Gulf Coast surroundings.

The original bleak outdated backgrounds were brought to life with simple, yet sophisticated new furnishings and décor, as well as a hand-painted "lagoon lusterstone" artistic finish on the headboard wall. Low-profile silhouette window coverings add to the room's chic simplicity and synchronize with the beautiful view.



Before

Before



After

The luxurious, spa-like master bathroom was expanded by eliminating a secondary water closet and linen closet, allowing for a spacious new walk-in shower and custom make-up vanity. Existing cabinetry and countertops were replaced with more modern Quartz countertops that waterfall down to the coordinating 12"x24" tile flooring. An outdated Jacuzzi was replaced with a chic, free-standing porcelain tub that sits before a unique sculptured wave tile wall.

For more information, please contact Koastal Design Group - Kira Krümm & Co.  
Ph: 239.992.5586 [www.KoastalDesignGroup.com](http://www.KoastalDesignGroup.com)