

HOME & DESIGN[®]

Luxury Homes | Interior Design | Home Furnishings



2017 Home & Design V2 \$9.95

| Southwest Florida |



COASTAL

elegance
EXPRESS REDESIGN FOR A NAPLES CONDOMINIUM



Interior Designer Kira Krümm was faced with a challenge when hired by her Michigan-based clients. The couple purchased a condominium in Naples' Tiburon community to be close to golf and friends, but needed the entire interior design redone in time to enjoy "season" in Southwest Florida. That deadline gave Krümm and company less than four months to work their magic.

"No renovations were required but all of the home's existing interior décor had to go and new furniture, fixtures, and accessories custom-ordered," says Krümm, owner and principal designer of Koastal Design Group. "The clients agreed they wanted everything in their new home to be casual, but sophisticated. When it came to the type of design, the wife preferred a classic look, while the husband liked a contemporary style."

Krümm proposed a compromise, "I suggested a transitional look, which coincides perfectly with my design philosophy, combining a neutral background palette with a simplistic design approach. I prefer balanced interiors, inspired by our surroundings that are classic and timeless." ▶

Previous Page: Clean lines evoke a sophisticated ambiance in the spacious dual-seating great room. The modern, low profile sectional sofa is upholstered in textured white Kravet Smart Fabric. All fabrics used are fiber-guarded," explains Krümm, "to afford them durability and livability, not just beauty". Twin sea-blue ottoman stools with chrome legs front a light gray, shagreen-topped coffee table. The convenient gray-wash wooden television console is from International Design Source. The end table hosts a polished- concrete lamp with a canvas shade. A chrome tripod standing lamp, and a nickel and crystal chandelier shining above the cocktail seating area are from Lighting First. A quartet of Kravet oversized armchairs with dark wood frames and neutral upholstery surround a coordinating whisper-gray, leather, swivel ottoman with a dark wood base, nickel accents, and a matching moveable center tray. Krümm's soothing tropical palette reverberates in accent colors such as Horizon Aqua and Sunset Gold. A pair of silver, hand-tufted, wool and viscose area rugs supplies a feel of luxury while delineating space in the room. Krümm was able to salvage some of the existing drapes in the lounge and dining areas by adding a band of contrasting fabric, and changing hardware, saving both time and money.

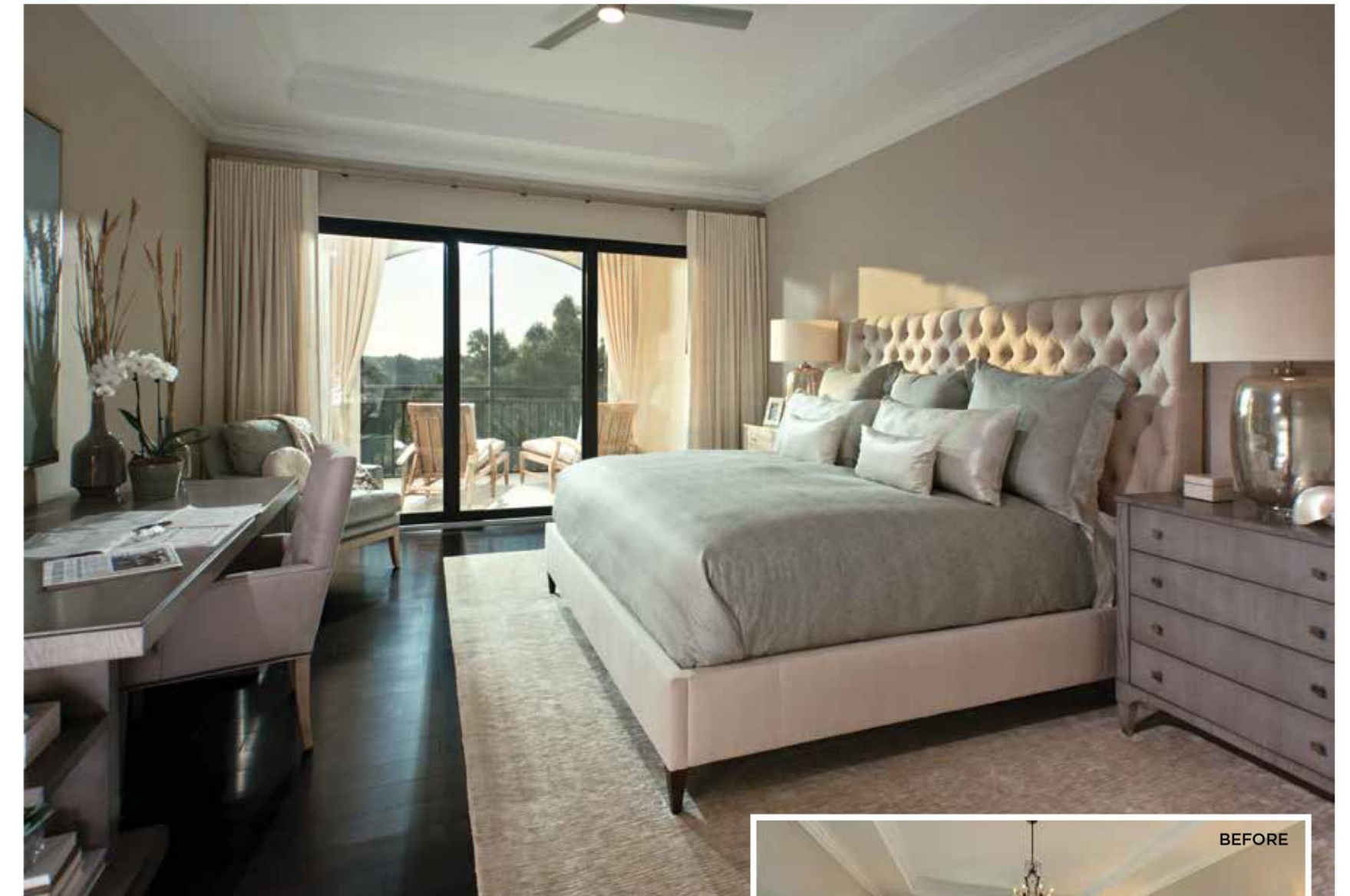
Right: On the kitchen island, a buff and cream quartzite countertop, provides a perfect place to entertain friends while allowing the chef to join the conversation. Transitional-style swivel counter stools in a natural linen fabric and dove gray wood finish coordinate with the 24-inch square porcelain tile flooring. The dark java wood cabinetry was one of the existing design elements with which Krümm had to contend. She struck a balance between dark and light elements by making use of complementary dark wood in the frame of the Henredon dining table chairs, the nearby cocktail lounge chairs, as well as in other areas throughout the home. Krümm retained the Sherwin-Williams Accessible Beige paint on the walls, which worked with her neutral approach to the backgrounds.





For a restful palette, Krümm selected the colors of Southwest Florida—the sand, sea, and sky. “We have finally moved away from the heaviness of the standard Mediterranean design that was so prevalent here in Naples, and into a less cluttered and more relaxed coastal elegance,” says Krümm. “Using soft blues, grays, and creams, we were able to create a serene sanctuary for the couple’s vacation home. Not only was the project done in time, but they love the redesign.” ■

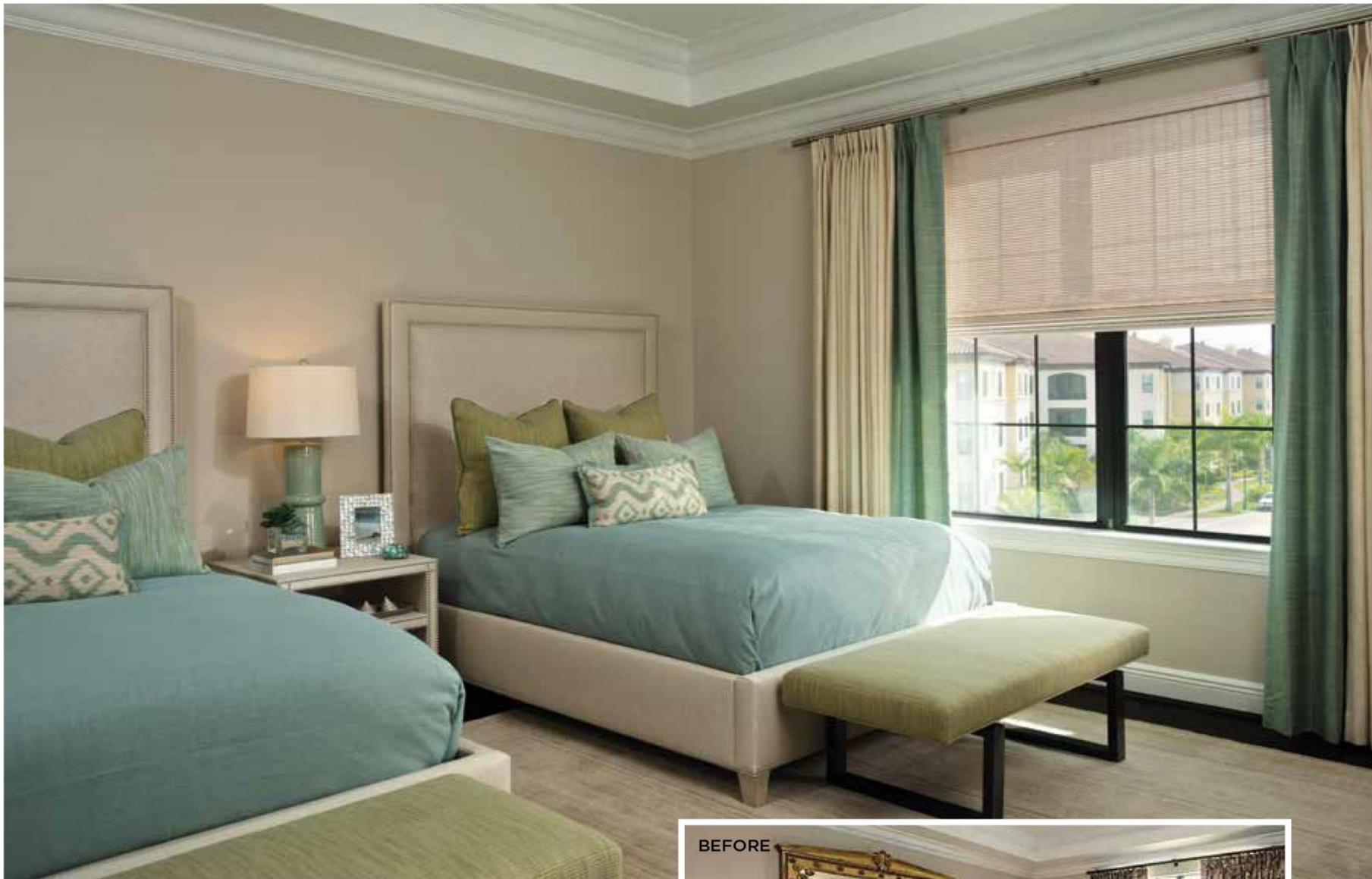
Left: Replacing the chaotic and overcrowded former design, Krümm took inspiration from the calming seascape photo that now serves as a focal point of the den and created a monochromatic palette. Krümm backed the artwork is a Phillip Jefferies natural woven raffia-patterned wall covering to add depth and a visual pop. The sand-hued sleeper sofa hosts throw pillows with a geometric print echoed in the metal appliqué of the drum chandelier above. The Vanguard stainless steel based ottoman coffee table removable inset tray is covered in Neptune Zinc cotton poly-acrylic. A bamboo silk-blend rug reflects the light from the sliding doors, creating a striated pattern. The window treatment consists of fixed sheer linen panels in steel blue, banded with a pearlized trim. Large mirrors in a silver painted frame flank the TV console and gather light from the balcony, where a set of weathered teak lounges offers another opportunity to enjoy the balmy breezes. A painted wood console from International Design Source features scallops that recall the gentle waves of the nearby Gulf of Mexico.



Opposite: The dining area features a Kravet 60-inch round glass-top dining table with polished-steel base and sleek Henredon chairs custom tailored in a cream and blue chevron patterned fabric and a dark wood finish. The chrome nail heads on the chairs coordinate with the table base. The chandelier overhead—the only fixture retained from the previous design—sports chrome accents with crystal arms, and an ivory shade. For the window treatments, Krümm replaced bronze hardware with brushed nickel, and banded the existing drapes in sea blue ombre trim to reflect the soft hue of the chair cushions.



Above: Krümm created a harmonious haven, replacing the original loud chartreuse dresser, nightstands, and bedding with Henredon drawer chests in a soft Weathered Mineral stain. She added a tufted headboard and bed frame upholstered in a light natural cream cotton-linen blend. Brushed cotton bedding of the softest celadon green adds to the restful ambiance, while a tone-on-tone bamboo silk-blend rug provides sensual pleasure underfoot. Mercury glass lamps add a bit of sparkle. A Whittemore-Sherrill armchair of driftwood gray and celadon lambskin leather situated in the corner is from International Design Source, as is the light sand colored upholstered desk chair with driftwood legs. The pewter-painted Henredon desk is a wonderful space to catch up on correspondence or work on a laptop. The sliding doors are now framed by airy sheers instead of the busy pattern of the former drapes. On the balcony, twin chaise lounges of weathered teak and mingled gray fabric, offer a prime view of Tiburon's Greg Norman-designed golf course.



Above: Instead of the original king bed in this guest room, the homeowners opted for matching full beds to maximize sleeping options for visitors. The Vanguard beds are fully upholstered with inset linen panels surrounded by nail-head-accented pearl leather. Twin Kravet benches, upholstered in textured, high-performance woven cotton, have oil-rubbed bronze legs to complement the dark wood floor. The same fabric is also used on coordinating decorative shams. A lamp of teal-glazed porcelain with a fabric shade sits on the pearl leather-topped nightstand. The khaki-toned wool rug creates a striated pattern, echoed in the lines of the sheer natural woven window treatments, banded in the same aqua shade as the duvets.

Opposite: A weathered gray chest from International Design Source is adorned with mirrored drawer-fronts and doors reflects the colors and textures of the guest bedroom. Atop, a celadon-green bottle vase holds botanicals, a shell fresh from the nearby beach, and a coral-inspired bowl providing a home for raffia balls and pearlized Capiz shells. An abstract landscape painting recalls the sea and sky when a storm is brewing. In the guest bath just beyond, the 3-D origami artwork provides visual interest in the minimalist surroundings.





Left: Behind the Kravet king bed in this second guest room are sheer, woven draperies with silver metallic stripes are paired with a woven-wood shade to ensure the morning light from this east-facing window doesn't disturb sleeping guests. An abstract painting shares the wall with another woven wooden shade, adding color and personality to the room. Geometric patterns on the bed pillows mimic shapes within the painting. The dark wood bed frame references the dark wood flooring. A subtle print on the oyster cotton fabric, which wraps the frame and headboard, supplies texture. Two pearlized whitewashed wood side tables by Vanguard Furniture are topped with pierced-metal lamps with linen shades, adding a soft luster to the scene.

Written by Kitt Walsh
Photography by Randall Perry

International Design Source
6001 Taylor Road
Naples, FL 34109
239.591.1114
www.ids1.com

Koastal Design Group
990 1st Avenue South, Suite 101
Naples, FL 34102
239.992.5586
www.koastaldesigngroup.com

Lighting First
28001 South Tamiami Trail
Bonita Springs, FL 34134
239.949.2544
www.lightingfirst.us