

See our On-line Magazines at HomeAndDesign.net

HOME & DESIGN

SOUTHWEST FLORIDA

LUXURY HOME MAGAZINE

Special Outdoor Living

GREAT SUMMER RECIPES

Outdoor Lighting Ideas

High-Tech Pools



SUMMER 2007

\$6.95

The finest homes,
products and services

PHASE IV ILLUMINATING SPACES

by *Kira Krümm*

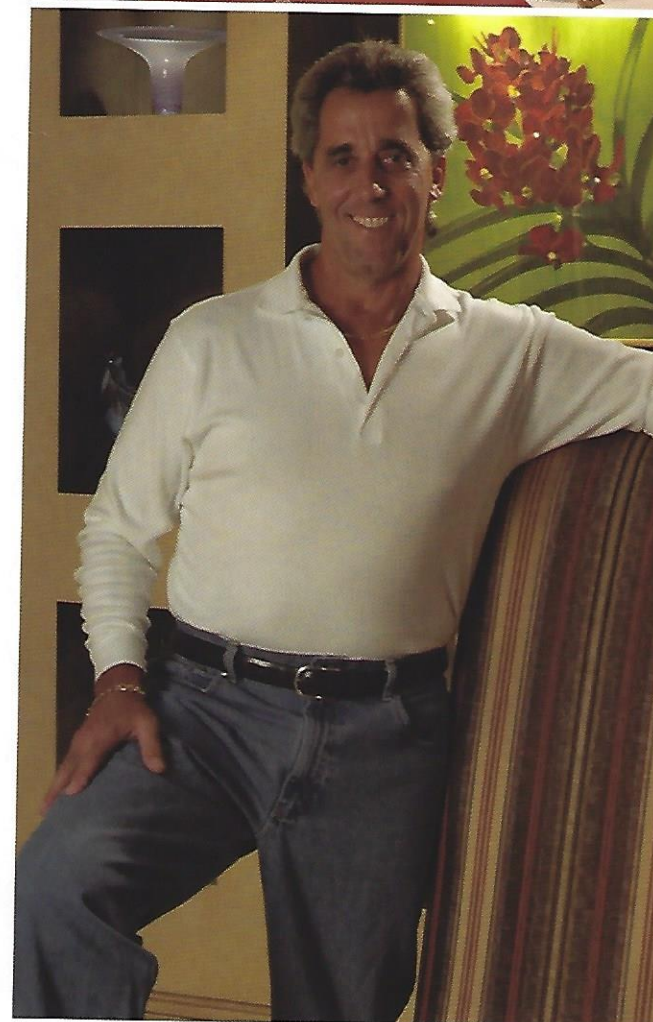
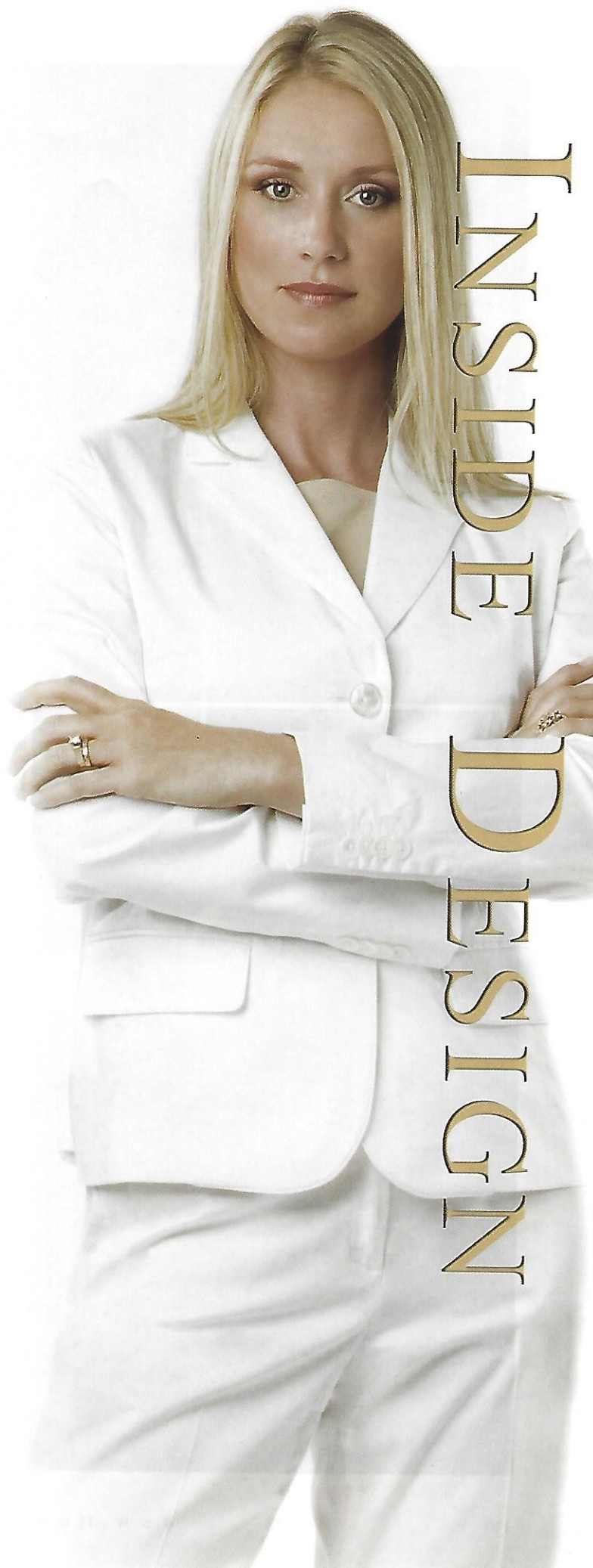
Lighting and electrical planning play an essential role in the design process. Your interior designer will work with your electrical contractor to develop and customize both your lighting and electrical plan. These plans are based on your lifestyle and lighting needs. They are designed around your floor plan and furniture layout that have already been established earlier in the process. The types of fixtures and how they are controlled must be determined before wiring begins. It is during this part of the design phase when critical decisions are made that will effect how your space is illuminated.

Lighting design is a speciality and requires knowledge about electrical, lighting and an understanding of the interior design process. Lighting designers like Mitch Fogelman bring years of expertise to the trade. "Educating and assisting clients with the techniques to create ambiance through lighting is my passion," says Fogelman. "We pride ourselves with providing unique design options and crafted installations."

These electrical technicians help not only in lighting aesthetics, but in figuring out electrical loads, technical details and assuring that everything is installed safely and properly.

Spaces must be properly lit for safety, wayfaring, tasking and esthetics. This can be achieved by many different methods of illumination.

General lighting is usually achieved by recessed down lights integrated in ceilings or by decorative fixtures such as chandeliers or pendants. Ambient and accent lighting can be achieved with indirect lighting such as rope lighting used in ceiling trays or decorative wall sconces. Task lighting is obtained by use of direct light from decorative lamps, fixtures such as pendants, or strong integrated lighting close to the activity area. ▶



When selecting your fixtures it is also important to consider that the type of bulb (in the industry this is referred to as "the lamp") will determine the color of light emitted from the fixture. The color of light has an effect on the esthetics of the environment. Incandescent bulbs, most commonly used, can create a nice ambient glow in a room, giving off a warm golden light. Fluorescent bulbs give off a bright cool colored light which can be good for general light in closets or at a desk for task lighting, but is not flattering to people or fabrics and finishes. Halogen and low voltage light is the most neutral in color and is great for accenting artwork and surfaces.

ABOVE - Megan Featherstone, design assistant for Kira Krümm Interior Design and Lighting Designer Lance Darby sourcing fixtures and fans for an interior project.

BELOW - Lighting Designer Mitch Fogelman in his showroom at Design Electric, located on Taylor Road in the Trade Center area of Naples.

OPPOSITE ABOVE - Kira Krümm and Brian Wilson, vice president of Wilson's Lighting and president of Mariana Lighting at the Mariana showroom at the High Point furniture market in North Carolina.



The type of fixture is determined by the lighting requirements and esthetics of each space and should be selected in the early stage so that the proper housing can be installed during construction.

Your designer will follow the lighting plan and make selections through catalogs or a lighting showroom. This takes the experience of your interior designer and the knowledge of lighting professionals who are most familiar with the products they represent.

Lance Darby supplies a wide variety of lighting sources to the trade. He works with designers to find the perfect fixture or fan to fit the lighting needs and interior décor. "I meet with the owner, designer and builder to

develop a working plan. My main goal is to accentuate the architecture and interior design, along with the necessary task lighting," states Darby.

Another great source for light fixture, fans and lamps are retail stores where you can see the size scale and finish of the fixtures.

Wilson's Lighting has a vast array of beautiful fixtures to select from.

Brian Wilson is president of Mariana Wilson Lighting's own line of light fixtures. "I think what makes Wilson Lighting such a great place to shop for lighting and home decor is that we have something for everyone. We travel the world and source product from domestic, European and Asian trade shows. We also design and manufacture Mariana, our own brand, giving us the most unique selection of products to work with."

The first thing you do when you enter your home or workplace is to illuminate your space. With the right professionals involved your environment will

be cast in the perfect light.

As I have always said, my clients can afford to go anywhere in the world, but when they choose to stay home, I know I have succeeded. ♦

*Until next month, keep your creativity outside the box and
Inside Design.*

Kira Krümm is an award-winning interior designer and COO of Kira Krümm Interior Design, located at 6062 Taylor Road, Suite 801, in Naples. She may be contacted by phone at (239) 593-4413, by email at Insidedesign@kirakrumm.com or by visiting www.kirakrumm.com. Kira Krümm Interior Designer License #ID4752 ASID, IIDA, IFDA, Associate AIA, NCIDQ Cert. #018631

*Photography by Randall Perry Photography
Photos courtesy of Kira Krümm Interior Design*