

See our On-line Magazines at [HomeAndDesign.net](http://HomeAndDesign.net)

# HOME & DESIGN<sup>®</sup>

SOUTHWEST FLORIDA

LUXURY HOME MAGAZINE



MARCH 2008

\$6.95

The finest homes,  
products and services





# HOME & DESIGN

## FEATURES

- The Doctor Of Design: Christopher Lowell .....49
- Martha Stewart Strikes Again .....56
- All The Comforts - Designer Bob Timberlake .....72
- The Style Of B. Smith .....81
- Liz Claiborne: Feminist Pioneer .....87
- Supermodel To Super Designer: Christina Ferrare ..114
- Nautica: Founded On An Immigrant's Dream .....120

## LUXURY HOMES

- Craftsmanship With A Flair .....22
- The House *Home & Design*® Built .....60
- Idyll Construction: Green On The Inside .....78

## TODAY'S HOME & DESIGN

- A Tropical Flavor .....36
- Making Your Own Statement .....98

ON THE COVER  
Courtesy of Frette

THIS PAGE  
Courtesy of Kira Krümm Interior Design  
Photography by Randall Perry Photography

MARCH 2008



## A TROPICAL FLAVOR

WITH A NORTHERN RESIDENCE AT THE Jersey Shore, designer Kira Krümm's clients decided to purchase a second home at the high-rise condominium The Trieste in Naples. "The clients wanted an interior that would suit their tastes, which leaned toward classic and traditional," explains Krümm. "We decided to give the residence a more tropical flavor through the use of ebonized wood that contrasts with light, crisp colors. Each room has a monochromatic color scheme and we focused our attention to detail on custom millwork, all of which is finished in a crisp, clean white."

Krümm had just eight months to turn this unfinished space into a stylish retreat. To introduce character to the space,

Krümm added custom wall finishes and flooring details, but lighting was a challenge. Working with contractor Kevin Rea of Specialty Building Services in Naples, Krümm added accent lighting throughout and masked the repositioning of "J" boxes in the concrete ceilings by creating ceiling panels over electrical chases. The team was able to transform this three-bedroom condo into a beautiful home just in time for the client's seasonal arrival.

Krümm's use of dark accent pieces placed against crisp white custom millwork and a lemon chiffon color palette gives the living room a classic feel. Krümm had the fireplace built from marble and wood and custom designed the wall panels on either side, where brass sconces create additional



architectural interest. An over-door pediment was custom designed and placed atop the elegant double doors leading to the master bedroom. The furnishings in this room, as throughout the home, were custom made. The sofa is covered in white Matelasse fabric, with yellow silk button detailing and tailored pleats on the skirt and back. As the clients are partial to plaids, Krümm introduced both large and small-scale yellow and white plaid fabrics on the fringed sofa accent pillows. A patterned silk jacquard fabric in a buttery yellow was used on the walnut framed side chairs. The area rug was custom designed and features a lattice pattern field and a botanical border. Two elegant hardwood chests flank the fireplace, while the room is lit with ambient lighting provided by the combination of wall sconces and traditional table lamps with silk shades.

The elegant dining room is also appointed with many touches of custom millwork, including the wainscoting. Custom ceiling panels lend drama to the space and the

ABOVE – The dramatic dining room features wainscoting and custom ceiling panels. Further visual interest is provided by the unique silhouette of the dining chairs that surround a round, glass topped table.

OPPOSITE – Krümm's lavish use of custom millwork in the living room includes wall panels at either side of the fireplace and an over door pediment was custom designed and placed atop the elegant custom made double doors leading to the master bedroom.



central round panel mimics the shape of the glass topped dining table and the area rug. Ebonized walnut dining chairs with their unique carved frames are covered in a lemon chiffon and white Matelasse fabric with a lattice pattern on the seats and seat backs, while the backs of the chairs are covered with a reverse of the pattern. The lemon chiffon corresponds with the antiqued finish on the hand-painted sideboard. The ebonized walnut frame mirror over the sideboard was framed by The Studio Gallery of Marco Island. The antique botanical etchings in the room were also sourced at The Studio Gallery. A classic six armed brass chandelier graces the ceiling, while through the column flanked ▶



archway, a wine cooler and built-in wet bar are visible.

A complete remodel was performed in the custom kitchen, which features a dramatic blend of light and dark cabinetry by Hyland Custom Cabinetry. Walnut cabinets were painted white and given a black glaze, while at the range hood and custom bar the dark walnut wood was left natural and washed with a black glaze. The bar was custom designed to include raised panel detail and intricately carved corbels, while the black absolute granite counter top was shaped in

ABOVE – In the kitchen, the combination of honey onyx and light and dark cabinetry give the space a definite personality. The custom bar features raised panel detail and intricately carved corbels, while the black absolute granite counter top was shaped in an eyebrow arch. The use of both under cabinet and recessed lighting throughout the kitchen gives the space a warm, honeyed glow.

OPPOSITE – Set into a bay window, the cozy breakfast nook features a banquette covered in black Matelasse fabric and accented with pillows in a variety of black and white fabrics that complement the balloon shade on the windows.





an eyebrow arch. The black swivel bar stools are covered in a tone-on-tone lattice pattern fabric. The decorative backsplash set with honey onyx and brushed nickel also features a tile insert in a black and white pattern. A brushed nickel lighting fixture hangs from a cove lit ceiling that

boasts a parchment finish in the tray.

The cozy breakfast nook features a custom designed banquette covered in black Matelasse fabric and accent pillows complement the balloon shade at the windows. Krümm also introduced a transitional wrought iron chandelier. ▶

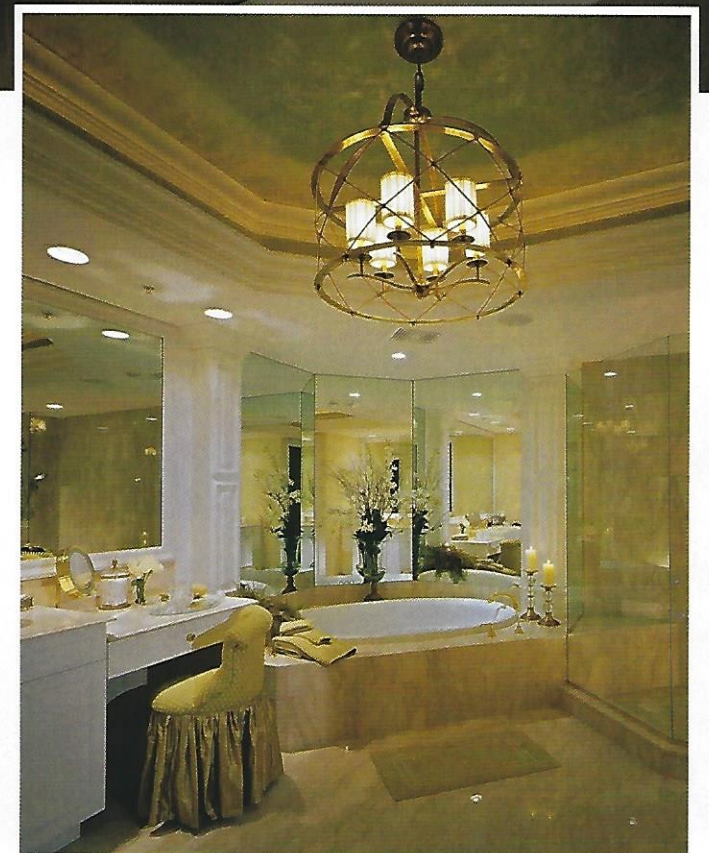


brought into the bath via the fabric on the vanity chair. The finishing touch to the space is the stunning brass chandelier that features an open lattice pattern. ▶

ABOVE – The master bedroom, with its tropical flavor, is a classic, tailored haven from which to appreciate dramatic sunsets. A creamy pistachio green was used on the walls and repeats in accents used throughout the space.

BELOW – Elegance was achieved in the master bath through the use of creamy Italian marble and elements of custom millwork, including the pilasters framing the mirrors at the back of the vanity and the moulding at the tray ceiling.

OPPOSITE ABOVE – The honey yellow sofa in the family room gives the space a pop of color, while coastal elements were introduced via white painted furnishings. A custom walnut built-in entertainment center by Hyland Cabinetry provides contrast to the lighter wood furnishings.





The first of two large guest rooms was given a dusty salmon color palette and contains two queen-sized beds with custom-made headboards covered in a botanical silk jacquard fabric. An upholstered window cornice board displays nail head details and tops a pair of silk side panels. Plaid carpeting and the custom frieze around the room's perimeter adds visual interest.

The second guest room is done in a coastal blue and features a king sized bed with a carved walnut headboard. The duvet features a silk crewel work fabric in the center boarded by an icy blue linen fabric, the same fabric used on the loveseat. Traditional table and floor lamps in rubbed bronze provide the lighting. ▶

ABOVE – The second guest room is done in a cool, coastal blue and features a king sized bed with a carved walnut headboard. The blue plaid fabric used on the window treatments frame magnificent views of the Gulf of Mexico.

BELOW – The first of two guest rooms received a dusty salmon color palette, custom upholstered headboards and a plaid rug, giving a nod to the clients' personal penchant for plaid.







ABOVE – On the spacious lanai, Krümm unified the space by using the same black and white toile used elsewhere in the home on the seating cushions and accent pillows.

Krümm has placed iron furniture whose cushions and accent pillows are upholstered in black and white toile on the lanai. A natural woven area rug and rattan paddle fan finish this tropical space.

With the interiors of the residence now as stunning as the natural views glimpsed through every window, Krümm's clients were thrilled with the final results of her work. ♦

*Courtesy of Kira Krümm Interior Design  
International Design Center  
10800 Corkscrew Road, #304  
Estero FL 33928  
239 992-5586  
Kirakrumm.com*

*Written by Kristine Hughes*

*Photography by Randall Perry Photography*