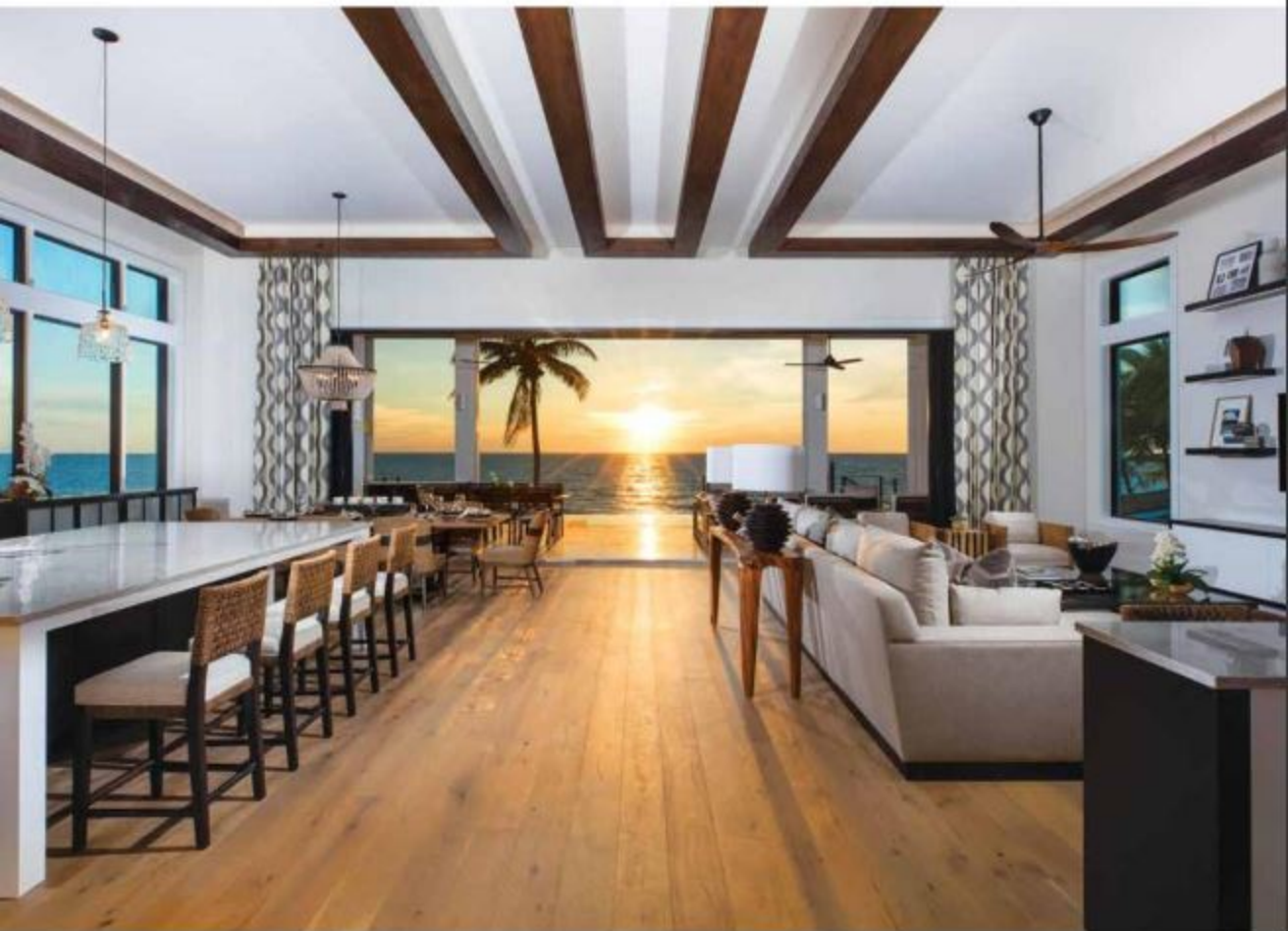


# HOME & DESIGN<sup>®</sup>

Luxury Homes | Interior Design | Home Furnishings



# PARADISE

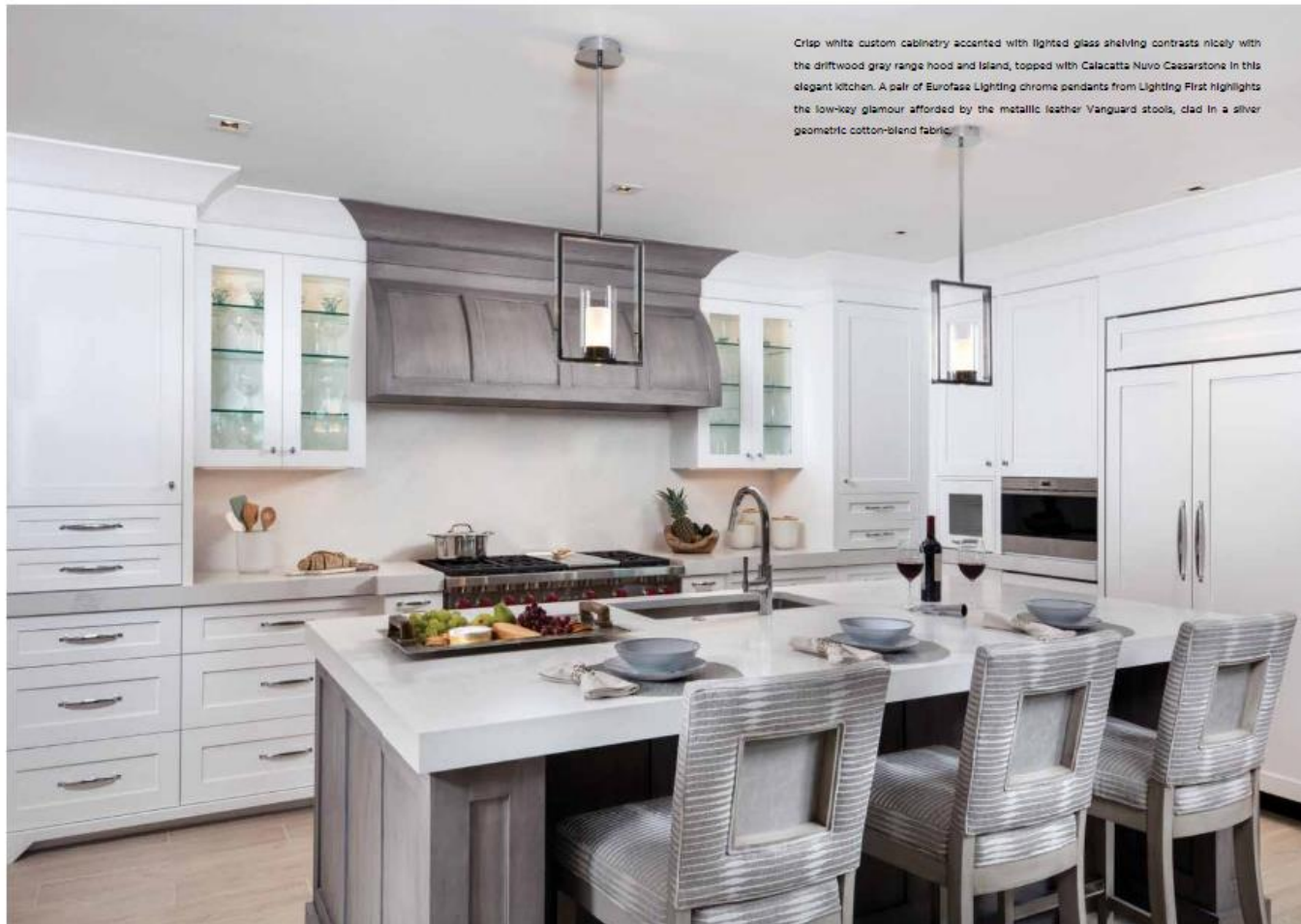
*on fifth*  
DESIGNER DREAMS DELIVERED



Sunset views over Naples' exciting 5th Avenue can be enjoyed via a Lloyd Flanders outdoor grouping oriented on a terrace balcony which runs the entire length of the condo. Inside the living room, an abstract landscape reminiscent of the cool greens, blues, and sandy neutrals of the nearby Gulf beaches sets the tone found throughout the home. A Vanguard sectional sofa of neutral nubby linen, and painted wood, chrome-legged coffee table flanked by armless taupe leather wing chairs are from International Design Source. A pair of sea mist green upholstered Jessica Charles ottomans adds extra seating and Surya accent lamps atop beechwood-stained tables softly illuminate the space.

You may have visited Naples and, like so many before you, fallen in love with its sugar sand beaches, world-class shopping and fabulous dining. You may have even dreamed you could stay and live forever, close to everything in this true paradise by the Gulf. ▶

Below: KRCMM made a clever use of the stacked space delineating the intimate dining area. To keep the view unobstructed, the designer recommended backless Vanguard benches—in zinc metallo (viable leather with Fog Shagreen shankskin leather detailed inserts)—as guest seating at the gray painted wooden table, set against the wood-look porcelain tile flooring by Design Works. Metallo leather tops the Vanguard armchairs, upholstered in champagne fabric and accented with nail-head details, that serve as the host and hostess seating. The Eurofase Londra Collection chrome chandelier from Lighting First is positioned to maximize the view. The entire dining area is flanked by floor-to-ceiling mercury glass mirrors, which reflect the sunset's hues and further define the space.



Crisp white custom cabinetry accented with lighted glass shelving contrasts nicely with the driftwood gray range hood and island, topped with Calacatta Nuvo Caesarstone in this elegant kitchen. A pair of Eurofase Lighting chrome pendants from Lighting First highlights the low-key glamour afforded by the metallic leather Vanguard stools, clad in a silver geometric cotton-blend fabric.

For one couple, their fondest dreams came true in a more glorious way than they may have imagined, brought magically to life by designer Kira Krümm of Koastal Design Group.

The couple had—through Gulf Coast International Properties—purchased their first home in Naples, a brand new three-bedroom plus den, three and a half-bath, 3,283 square foot condominium in the boutique-style Residences at 5th & 5th. The homeowners then went shopping for an interior designer and walked into Krümm's studio gallery. ▶

Below: The hand-applied Dune LusterStone artistic finish creates a serene ambience in the master bath. The "Blue Horizon" painting reflecting a storm over the ocean brings color to the space. Porcelain sea urchins and hand-blown glass orbs moored above the tub provide a bit of marine-inspired whimsy. Krümm chose freestanding sculptural towel racks to add the final bit of luxury for the bath:



Setting a warmer tone in the master bedroom, Krümm made use of artisans from the company she and her husband own, Studio Artistic Finishes, to hand apply a subtly metallic warm champagne finish to the headboard wall and ceiling tray. The other walls sport a lighter Dune LusterStone artistic finish. The sculptural German silver base of the Bernhardt armchair reflects light from the French doors to the balcony. The Mesalini champagne wool and silk rug provides soft cushioning underfoot.



Above: Natural grasscloth covering adds texture to the walls of the dual-use den. The linen-blend Jessica Charles queen size sleeper sofa serves as extra sleeping for guests and the Vanguard ottoman with Cliffside Gray wood base and platinum geometric fabric top, is set on casters for ease of furniture rearrangement. A pair of shelving units bookend a textured metal-framed Moroccan mirror adjacent to a handmade paper framed art piece. The desk, of burnished silver leaf applied by hand, and Century desk chair in soft gray leather, afford the perfect workspace in this versatile room.



"It was a little like magic," says Krümm. "We were very simpatico right from the start and the homeowners truly shared my aesthetic. They loved everything in my studio and supported my vision, therefore they trusted my recommendations and the selection process was seamless. I was given the privilege of furnishing their entire new home—from wall coverings to cutlery—and the only real challenge was time."

Choosing an elegant but totally livable design that had luxurious appointments yet a casual feel, wasn't a problem for Krümm, a 25-year veteran of the design business who has won countless awards for her work, it was the timeline until move-in that made the experience a nail-biting one.

"We had only six weeks to select and procure the furnishings," says Krümm, which meant the designer and her team had to drop nearly everything, concentrate fully on this one project, order readily available furniture and furnishings, and use her design mastery to assure the whole project came together in time. ▶

Above: A Vanguard king size bed, with Neptune Patina bronze synthetic performance leather, studded with nailhead detail, commands the masterful king bedroom. The dresser and nightstands, with their warm wood finish and nickel pulls, are from International Design Source. The foot of the bed is bordered by a Lexington bench covered in metallic bronze linen and the bedding, designed by KDS Custom, includes an ikat-patterned comforter. Accent pillows reflect the tropical green shades found in the room's "Agave" triptych photo by Michael Berlan.



"My team and I managed to pull it off and when the homeowners arrived their table was set for dinner, the kitchen was stocked, and even the towels and beds were laundered and ready for company," says Krilimm. "Everything was ready for them to enjoy, welcoming and attuned perfectly to their tastes. ■"

Below: Platinum raffia wall covering brings a sense of movement to this dramatic powder bath. Eurofase crystal sconces from Lighting First inset into the tall mirror provide dramatic lighting for the Caesarstone quartz countertop with trough sink. Decorative shell accessories add lightness to the dark driftwood finish cabinetry.

Left: Custom designed shades handwoven in the Philippines frame the doorway, as they do all windows and doors in the home. A Bernhardt bench of tarnished nickel with acrylic legs, upholstered in zinc-colored polished cotton, sits beside the tallboy Vanguard dresser topped with a banded metal mirror and seashell base accent lamps from Wilson Lighting. The custom bedding is organic cotton and accent pillows mimic waves from the nearby Gulf.

